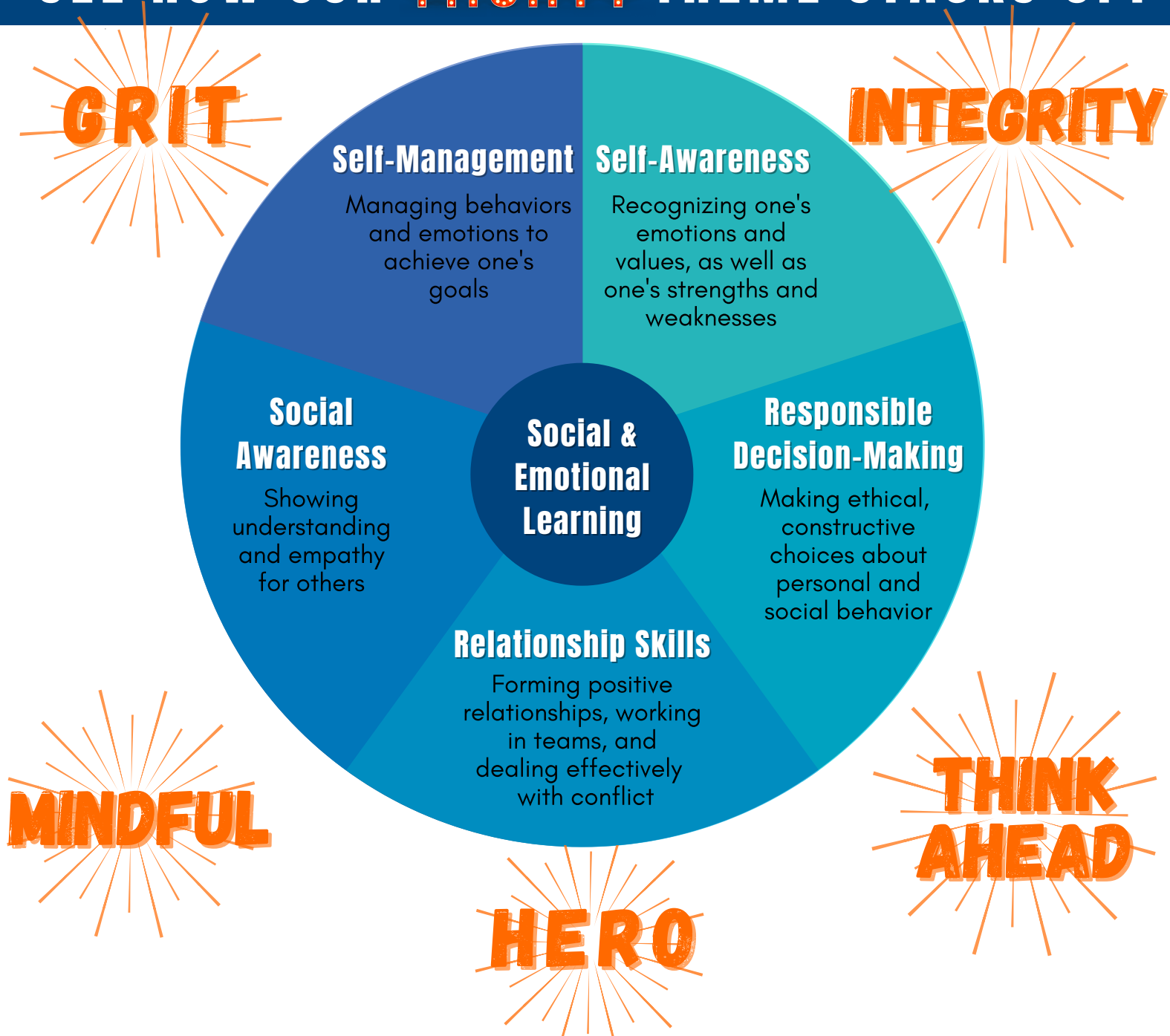


# What is Social & Emotional Learning?

*Social & Emotional Learning (SEL) is the process through which children and adults understand and manage emotions, set and achieve positive goals, feel and show empathy for others, establish and maintain positive relationships and make responsible decisions.*



## SEE HOW OUR **MIGHTY** THEME STACKS UP!



*79% of employers say SEL skills are the most important qualities for job success. With Apex you can rest assured because our character education lessons align with the social & emotional learning principles, helping children thrive.*

building tomorrow's leaders today!